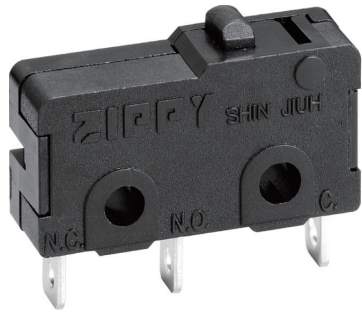
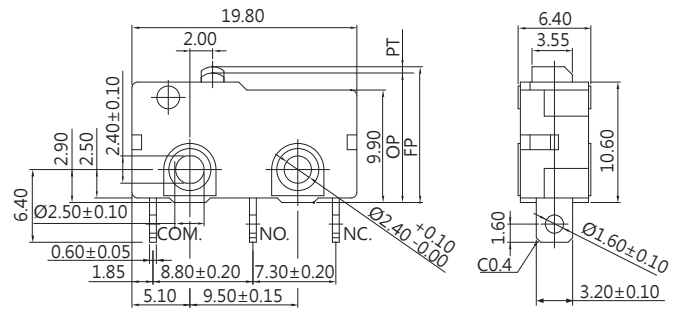


MICRO SWITCHES



DIMENSIONS

Unless otherwise specified, a tolerance of $\pm 0.4\text{mm}$ applies to all dimensions.



SM SERIES

SPECIFICATIONS

Contact Resistance(initial)

Max. 300 m Ω

Measured by ohm meter - open voltage < 1VDC, driver current -100 mA

Insulation Resistance (at 500 VDC / minute)

Min. 100 M Ω

Dielectric Strength

Min. 1000VAC(50-60HZ)/minute between Live parts.

Min. 1250VAC(50-60HZ)/minute between Live parts and dead metal parts

Operating Temperature Range

-40°C to 120°C (with no icing)

Vibration

10~55Hz, displacement 0.75 mm (p-p)

Electrical Service Life

0.1A - Min. 1,000,000 operations

Other rating - Min. 10,000 operations

Electrical Operating Frequency

10~30 operations per minute

Mechanical Service Life

Min. 10,000,000 operations

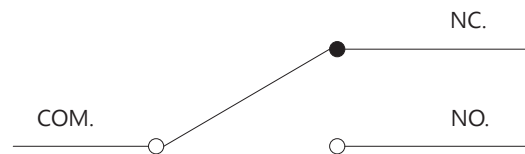
Mechanical Operating Frequency

120 operations per minute

Operating application of the switch

Set the switch pushing distance from 60% to 90% of the specified OT value

CONTACT CONFIGURATION



CERTIFICATE INFORMATION

Model Name	UL, cUL
SM-P1	0.1A 125/250VAC
	0.1A 30VDC (Temp:120°C) Min. 10,000 operations
SM-G1	0.1A 125/250VAC
	0.1A 30VDC (Temp:120°C) Min. 10,000 operations
SM-O5	5A 125/250VAC
	5A 30VDC (Temp:120°C) Min. 10,000 operations
SM-G5	5A 125/250VAC
	5A 30VDC (Temp:120°C) Min. 10,000 operations

APPLICATIONS

Telephone, Air conditioner, Computer, Humidifier, Alarm, Time recorder, Mixer & Chopper, Solder gun, Neon phone, Fax machine, Joystick, Water pump, Gas detector, Pencil sharpener, Money sorter, Food processor, Electric knife, Toy car, Juicer, Electric steak pan.

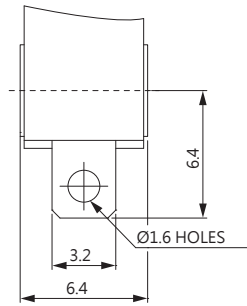
THE SELECTION OF RATING & FORCE

MODEL	Rating	D	L	S	H	Q	T
SM	0.1A	*	*	*	*	*	*
	5A			*	*	*	*

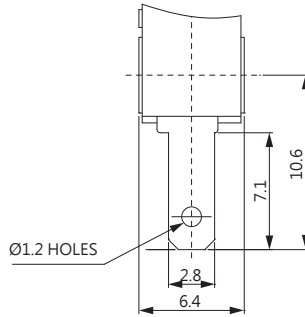
NOTE : The Symbol " * " to represent the result is accepted

TERMINAL TYPES (The thickness of each terminal is 0.6mm)

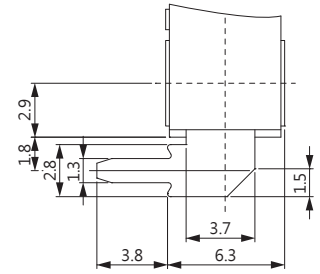
A TYPE



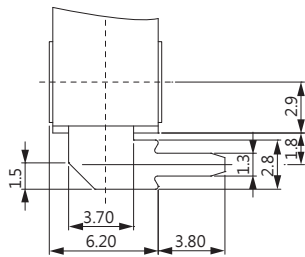
B TYPE



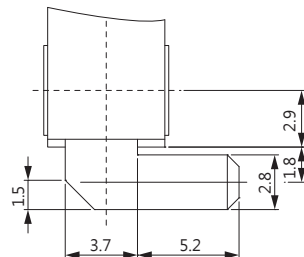
C TYPE



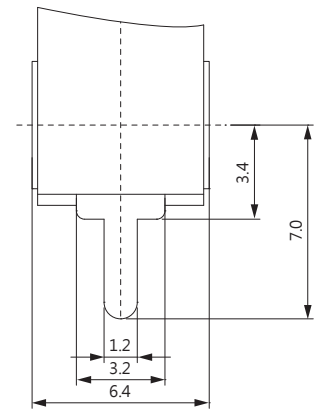
D TYPE



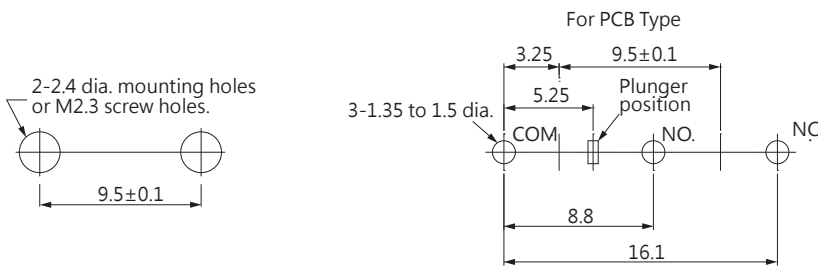
E TYPE



P TYPE



MOUNTING HOLES

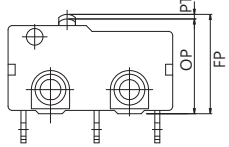
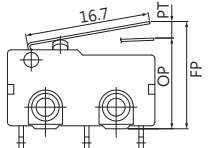
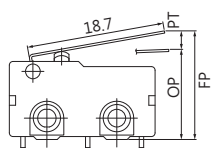
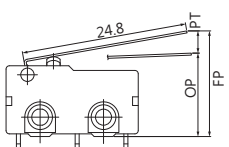
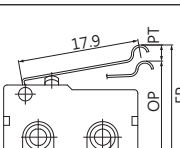
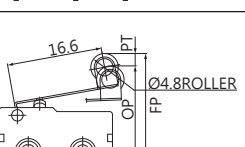
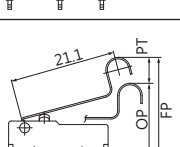
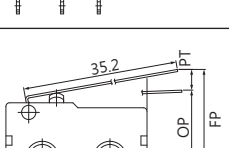
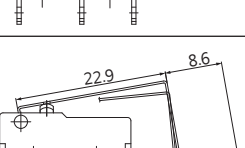
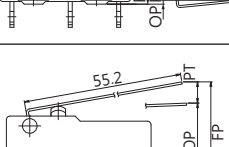


ORDERING INFORMATION

S	M	0	5	S	0	3	P	0	Z		
SERIES PREFIX		RATING CURRENT		OPERATING FORCE		ACTUATOR TYPE		TERMINAL TYPE		CIRCUIT ARRANGEMENT	ROHS CODE
P1		0.1A 125/250VAC		T MAX HEAVIER		00		A		0	S.P.D.T.
05		5A 125/250VAC		Q HEAVIER		01		B		1	S.P.S.T. NO
				H HEAVY		02		C		2	S.P.S.T. NC
				S STANDARD		03		D			
				L LIGHT		04		E			
				D SLIGHT		:		P			

#NOTE		
ITEM	RATING CURRENT	OPERATING FORCE
1	Code:P1	T,Q,H,S,L,D
2	Code:05	T,Q,H,S

OPERATING CHARACTERISTICS

SWITCH TYPE	PART SUFFIX	OF Max. (gf)		OP (mm)	PT Max. (mm)	OT Min. (mm)	MD Max. (mm)	FP Max. (mm)	RF Min. (gf)
		H	S						
SM- □□□ -00 □□ -Z		H	249	11.4±0.3	1.1	0.4	0.2	12.2	50
		S	146						35
		L	104						20
SM- □□□ -01 □□ -Z		H	66	11.8±0.8	3.6	0.6	0.8	14.6	9
		S	40						6
		L	30						3
SM- □□□ -02 □□ -Z		H	58	11.8±0.9	4.0	0.6	0.8	14.9	9
		S	36						6
		L	25						6
SM- □□□ -03 □□ -Z		H	45	11.8±1.5	6.1	0.8	1.5	16.4	6
		S	28						4
		L	20						5
SM- □□□ -04 □□ -Z		H	56	13.7±1.0	4.6	0.8	0.8	17.3	13
		S	34						8
		L	25						5
SM- □□□ -05 □□ -Z		H	60	17.5±0.8	3.8	0.8	0.8	20.5	15
		S	35						8
		L	25						6
SM- □□□ -06 □□ -Z		H	48	19.0±1.5	5.7	1.0	1.0	23.2	10
		S	28						6
		L	20						4
SM- □□□ -07 □□ -Z		H	30	11.8±2.0	8.6	1.5	1.8	18.4	7
		S	20						4
		L	15						2
SM- □□□ -08 □□ -Z		H	30	-2.3±3.0	6.0	1.0	1.9	5.4	3
		S	20						4
		L	15						2
SM- □□□ -09 □□ -Z		H	18	11.8±3.0	13.3	1.0	2.9	22.1	4
		S	12						2.5
		L	8						1.5