

PUSH SWITCHES



P1 SERIES

SPECIFICATIONS

Insulation Resistance (at 500VDC/minute)

Min. 100MΩ

Operating Temperature Range

0°C to 55°C

Vibration

10 ~ 55 Hz, displacement 0.75 mm (p-p)

Electrical Service Life

Min. 10,000 operations

Electrical Operating Frequency

10 operations per minute

Mechanical Service Life

Min. 100,000 operations

Mechanical Operating Frequency

30 operations per minute

Travel

Pre travel Max.1.5mm,

Total travel 2.5±0.5mm

RATING

0.1A 30VDC

APPLICATIONS

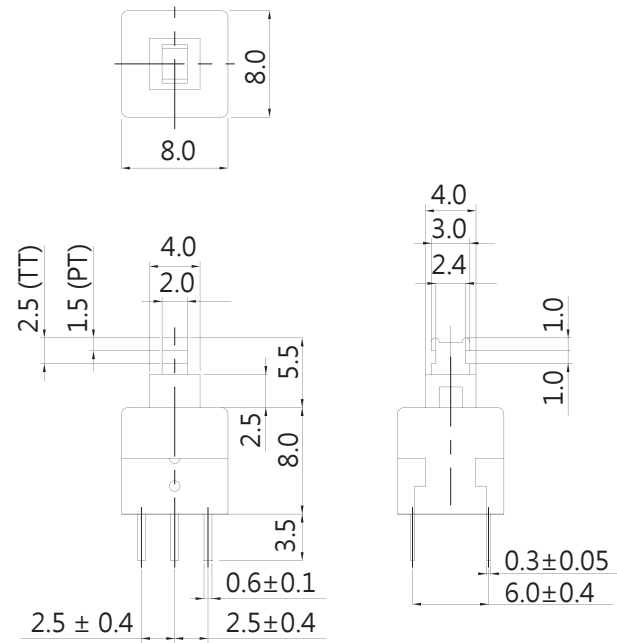
Telephone, Computer, Tester, Automotive, Apparatus

ORDERING INFORMATION

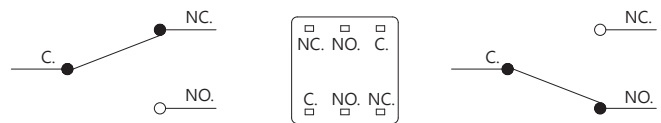
| | | | | | | | | | | | |
|---------------|---|------|----------------|------|-----------------|------|-----------------|------|------------------|-----------|--------|
| P | 1 | 1 | S | Z | NO-TOP BUTTON | | | | | | |
| P | 1 | 1 | S | 1 | L | Z | | | | | |
| SERIES PREFIX | | CODE | TYPE | CODE | OPERATING FORCE | CODE | TOP BUTTON TYPE | CODE | TOP BUTTON COLOR | ROHS CODE | |
| | | 0 | NON LOCK | L | LIGHT | 1 | 7 x 7 x 8 mm | R | RED | W | WHITE |
| | | 1 | LOCK | S | STANDARD | 3 | ∅7x8 mm | L | BLUE | E | GREEN |
| | | 2 | NON LOCK CLICK | | | | | B | BLACK | Y | YELLOW |

DIMENSIONS

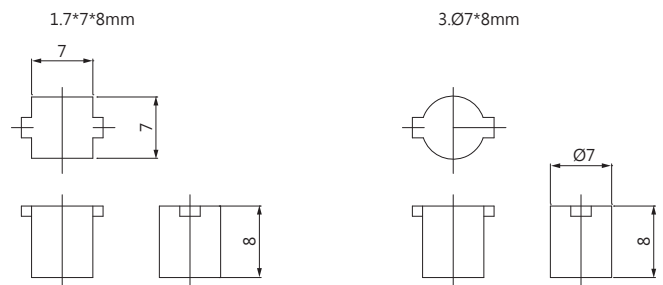
Unless otherwise specified, a tolerance of ±0.4mm applies to all dimensions.



CONTACT CONFIGURATION



TOP BUTTON DIMENSIONS



OPERATING FORCE

| FORCE/TYPE | NON LOCK | LOCK |
|------------|-------------|-------------|
| L | 90 ± 30 gf | 130 ± 50 gf |
| S | 150 ± 50 gf | 180 ± 50 gf |