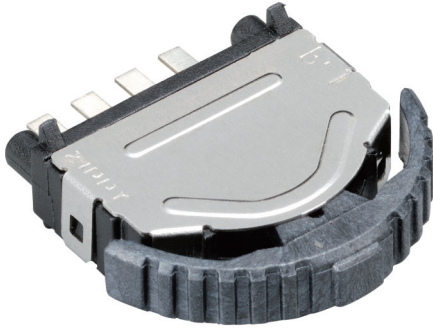


# SLIDE SWITCHES



## B51 SERIES

### SPECIFICATIONS

#### Contact Resistance (initial)

Max.500 mΩ.

Measured by ohm meter - open voltage < 1VDC, driver current -100 mA

#### Insulation Resistance (at 100 VDC /min.)

Min 100 MΩ.

#### Operating Temperature Range

-10°C to 60°C (with no icing)

#### Vibration

10~55Hz, displacement 0.75mm(p-p)

#### Electrical Service Life

Min. 100,000 operations

#### Electrical Operating Frequency

20 operations per minute

### RATING

10mA, 5VDC

### APPLICATIONS

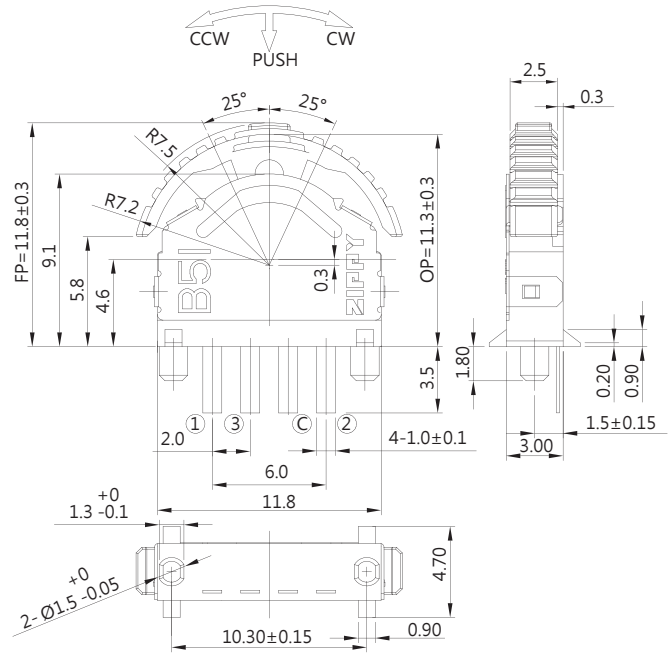
Mouse

### ORDERING INFORMATION

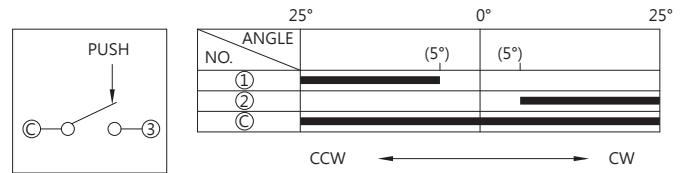
<b>B</b>	<b>5</b>	<b>1</b>	—	<b>P</b>	<b>5</b>	<b>N</b>	—	<b>1</b>	<b>P</b>	—	<b>Z</b>	
SERIES PREFIX				ACTUATOR TYPE		OPERATING FORCE		FEELING TYPE		TERMINAL TYPE & CIRCUIT ARRANGEMENT		ROHS CODE
				P5 STANDARD		N 90 ± 45gf S 150 ± 100gf		1 NON CLICK		SMT TERMINAL SP3T		

### DIMENSIONS

Unless otherwise specified, a tolerance of ±0.4mm applies to all dimensions.



### CONTACT CONFIGURATION



### MOUNTING HOLES

