

ENCODER SWITCHES



RP SERIES

SPECIFICATIONS

Contact Resistance (initial)

Max. 100 mΩ

Measured by ohm meter - open voltage < 1VDC, driver current -100 mA

Insulation Resistance (at 50VDC/minute)

Min. 10MΩ

Operating Temperature range

-10°C to 65°C (with no icing)

Vibration

10~55Hz, displacement 0.75 mm (p-p)

Electrical Service Life

Min. 200,000 operations

C.W. 100,000 & C.C.W 100,000 operations

Electrical Operating Frequency

Max.18 operations per minute

RATING

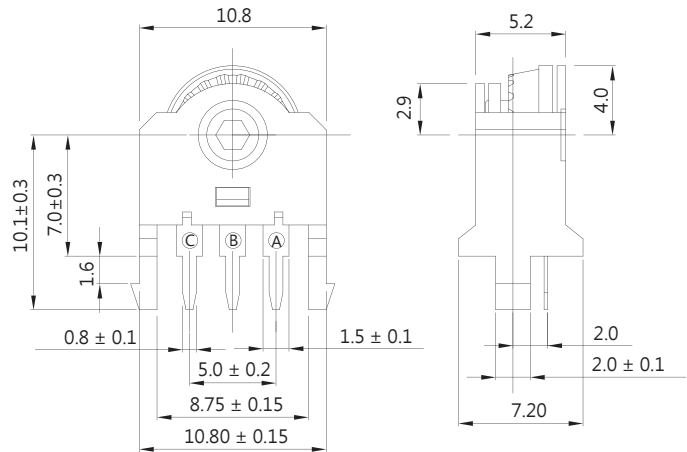
1mA 5VDC

APPLICATIONS

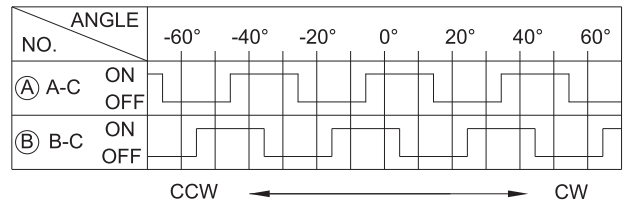
Mouse, Keyboard, Fax machine, Remote control, LCD monitor, Set top box, Browser

DIMENSIONS

Unless otherwise specified, a tolerance of ±0.4mm applies to all dimensions.

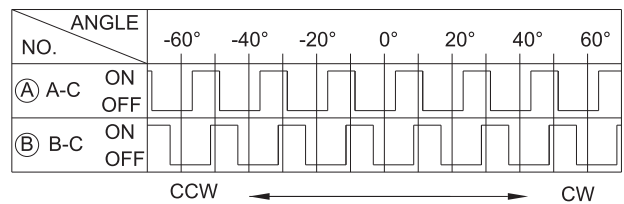


CONTACT CONFIGURATION



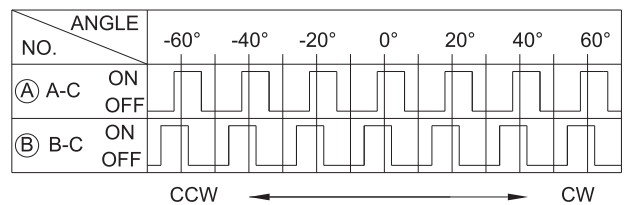
Numbers of detent : 18

Pulse / Rotation: 9 Pulse /360°



Numbers of detent : 18

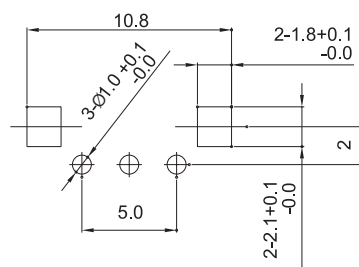
Pulse / Rotation:18 Pulse /360°



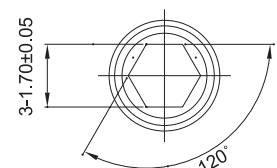
Numbers of detent : 18

Pulse / Rotation:18 Pulse /360°(reverse)

MOUNTING HOLES

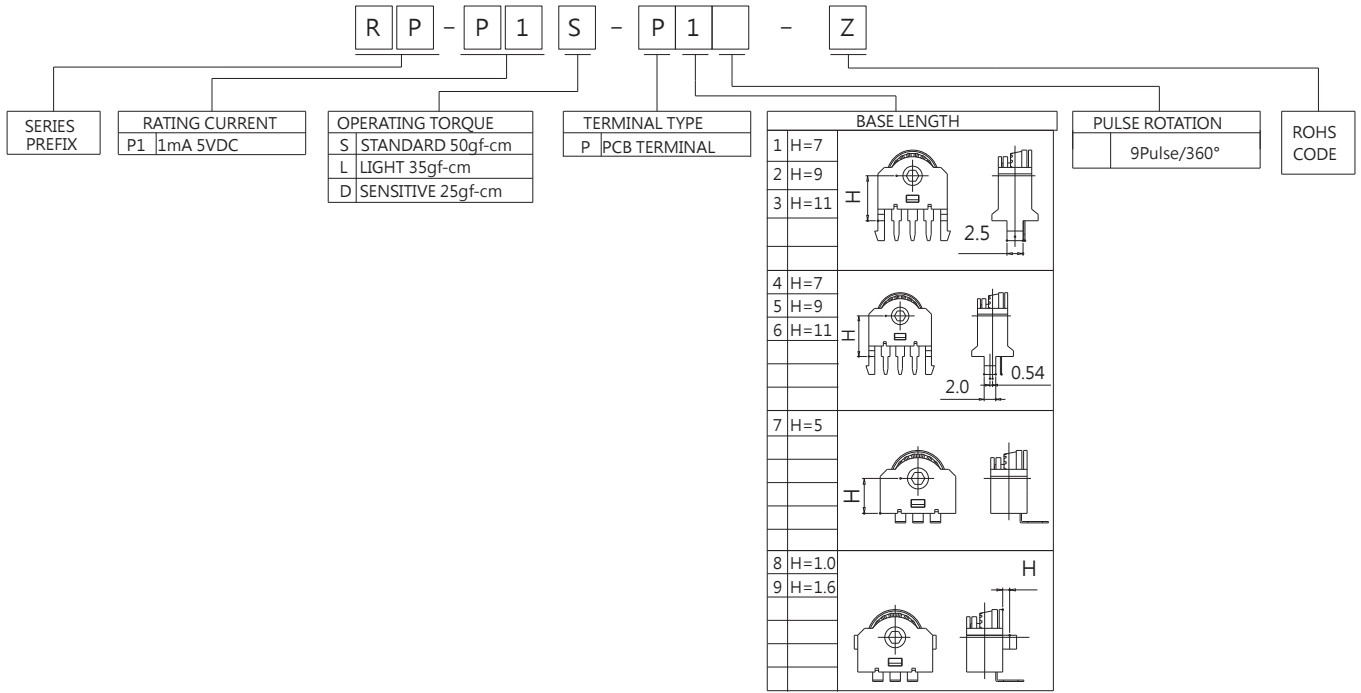


HEXAGONAL HOLE



ORDERING INFORMATION

Pulse / Rotation : 9Pules/360°



Pulse / Rotation : 18Pules/360°

